



POWER
ENGINEERING EXCELLENCE
TRUST

POWER ENGINEERING EXCELLENCE TRUST

PEET Membership and Information Document



New Zealand's Centre of Excellence in Electric Power Engineering



UNIVERSITY OF
CANTERBURY
Te Whare Wānanga o Waitaha
CHRISTCHURCH NEW ZEALAND

Mission

“To promote and support the education of power engineers and the study of power engineering as a field of excellence in New Zealand.”

PEET carries out this mission through an extensive scholarship scheme for undergraduate and postgraduate students, and through Electric Power Engineering Centre (EPECentre) led events and activities.

Vision

Together, PEET and the EPECentre have a vision to carry out electric power research of national industry significance that is internationally recognised, and to see a sustainable stream of high calibre electric power engineering (EPE) graduates moving from university to industry and research each year.

Objectives

The EPECentre works in support of PEET to deliver excellence in three key areas:

Education

Enhance power engineering education:

- Inspire and enable more students to choose power engineering.
- Facilitate career opportunities for students.
- Create a world class power engineering tertiary education portfolio.
- Provide Undergraduate and Postgraduate scholarships.

Industry – Academia

Sustainable relationships and communications between industry and academia:

- Facilitate efficient graduate recruitment process.
- Facilitate active industry participation, partnership and funding support.
- Foster strong international relationships with similar entities.

Research & Innovation

Undertake and deliver world class engineering research and innovation with industry:

- Leading research capability in power engineering for students and industry.
- Best practice research and innovation.

Membership

We invite you to join us and invest in the future of our industry. As a member, your company will gain access to the following exclusive opportunities:

Premium Member Benefits

- Exclusive company exposure to discipline targeted students at UC. This is achieved through exclusive acknowledgement at EPECentre led events and display screens profiling your company, in high traffic areas.
- Include your company in multi day field trip site visits (North Island Tour or South Island Tour).
- Reserve premium exhibition space at EPECentre led graduate recruitment events.
- Speak/Present at EPECentre events and seminars open to the electricity industry and students.
- Receive a “Premium member” acknowledgement in all EPECentre promotional material.
- Your company’s promotional posters displayed at EPECentre premises.

Member Benefits

Education

- Participate at professional development opportunities such as seminars and workshops open to PEET members.
- Help to inspire and educate students at secondary and tertiary level so they achieve qualifications that add value to the electricity industry.
- Host student field trips and enable greater knowledge of the industry to take place.
- Guest lecture at the University of Canterbury.

Graduate recruitment; a channel to students in power engineering

- Promote your company through educational initiatives.
- Participate and promote your company at events including the annual Careers Convention and the R&D expo.
- Utilise the EPECentre and its premises to efficiently advertise and interview potential summer students and graduates.
- Promote your company to upcoming graduates through EPECentre literature and marketing mediums.

Industry development

- Participate in leading research and development projects that add value to the electricity industry and contribute to the development of energy policies.

Business development

- Network with PEET members at EPECentre led events including the annual Careers Convention, R&D expo, conference, seminars, workshops and other events exclusively open to PEET members.
- Listing and acknowledgement on all EPECentre promotions and presentations.
- Listing and acknowledgement on the EPECentre’s website.

Access to information

- Download research publications and information resources.
- Receive our twice yearly newsletter covering news and events in support of PEET, and latest research findings of interest to the electricity industry.
- Participate in industry focus groups and workshops led by the EPECentre.

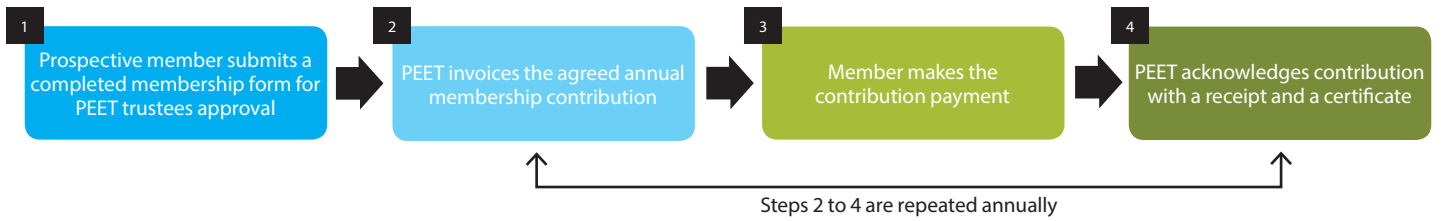
PEET Membership Contribution Bands

Premium Member Donation	\$20,000+ p.a			
Member Donation	\$15,000 p.a.	\$10,000 p.a.	\$7,500 p.a.	\$5,000 p.a.

The Power Engineering Excellence Trust (PEET) is a Charitable Trust under the NZ Charitable Trusts Act of 1957; it is unregistered for GST and recognised by the IRD as a “Donor” organisation. Any donations made by organisations to a “Donor” organisation are eligible for a 100% tax rebate.



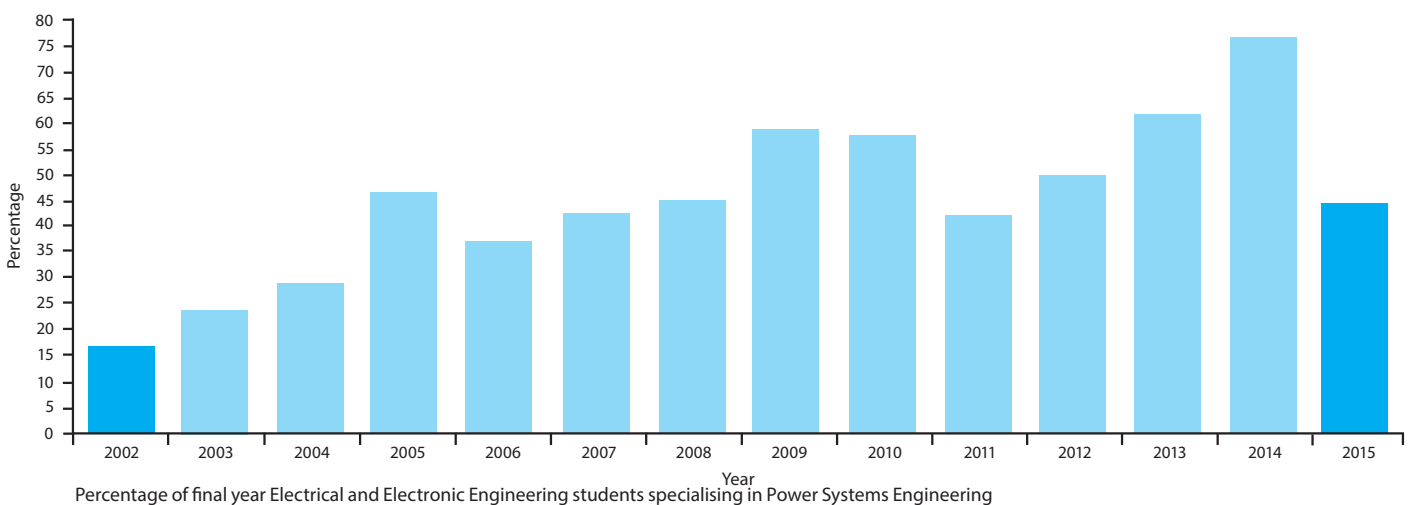
Membership Process



Power Engineering Excellence Trust Trustees

Industry Sector	Current Industry Sector Representative Member*	Board Member
Professional Engineering	Electricity Engineers' Association (EEA)	Peter Berry (Chairman PEET & EPECentre)
Generation	Mighty River Power	John Foote
Distribution	Mitton ElectroNet	Tas Scott
Transmission	Transpower NZ	John Clarke
Consultancy	Beca	Craig Price
Contracting	Electrix	Robert Ferris
Academia	University of Canterbury	Prof. Neville Watson
Trust Executive		Sean McCready
Trust Secretary	Mitton ElectroNet	Valerie Lang

*Board represents industry with a trustee for each "key" industry sector (Trustees are currently on a rotational basis for a fixed term of three years). All PEET trustees, except Professor Neville Watson, are members of the EPECentre Board. Professor Jan Evans-Freeman, Dr Andrew Laphorn and Dr Allan Miller (from the University of Canterbury) are members of the EPECentre Board only.



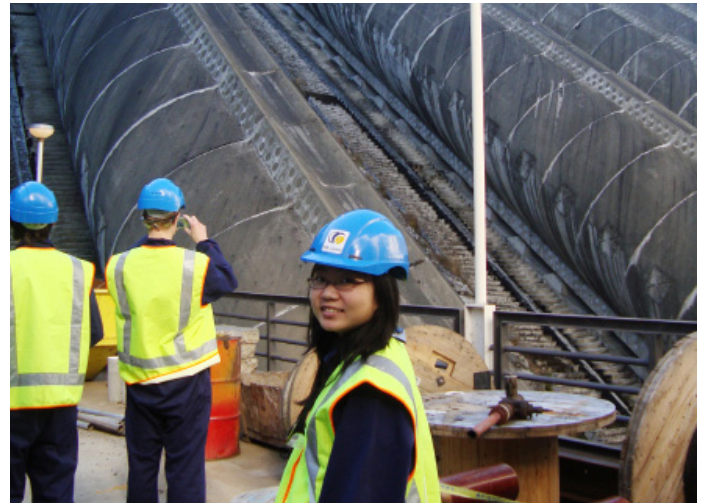
Students at Haywards Substation during a multi-day field trip



Students presenting their work at the EPECentre R&D expo



Careers Convention



South Island field trip

Thank you to our Power Engineering Excellence Trust members

Premium Members



TRANSPOWER



meridian



unison
The Powerlines People



Members



For more information contact:

Dr Allan Miller
EPE Centre Director
DDI: 03 364 3787
F: 03 364 3783
E: allan.miller@epecentre.ac.nz



POWER
ENGINEERING EXCELLENCE
TRUST

Visit our website www.epecentre.ac.nz



PEET membership application form

Your Details –Page 1

Company name

Company website

Physical address

Postal address

CEO name & email address

Company contact person, phone & email

Date: dd/mm/yyyy

Signature

PEET membership preferences form

Page 2

PREMIUM

\$20,000.00 p.a Premium membership

Optional: I / We will be organising a large recruiting poster for display at the University of Canterbury.

Other

\$15,000 p.a. \$10,000p.a. \$7,500 p.a. \$5,000 p.a.

Please send invoice to:

Compulsory (please tick)

We have supplied the Company Logo (for publicity purposes).

We agree to the EPECentre using our logo for promotional purposes.

We wish to receive the PEET annual report by Hardcopy and/or Electronic copy.

We would like to be notified by email of the following annual events:

Field trips R & D Expo EPECentre careers convention Media releases
 Other special events Research findings/projects Industry workshops & seminars

We would be interested in hosting Electric Power Engineering student field trip(s) on our premises.

We have supplied company power point slides to be displayed at the EPECentre reception.

Thank you for completing your application form. Please email this to: info@epecentre.ac.nz
You will hear from us soon.